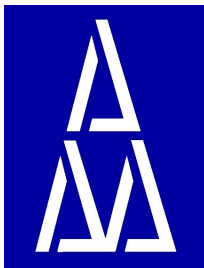
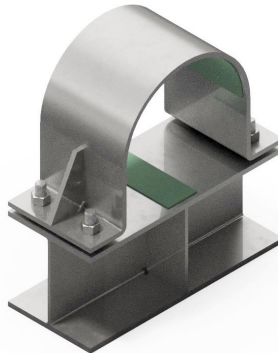
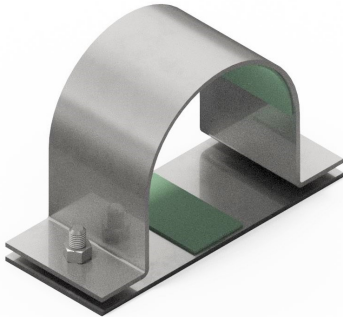
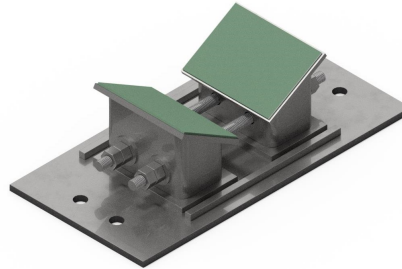
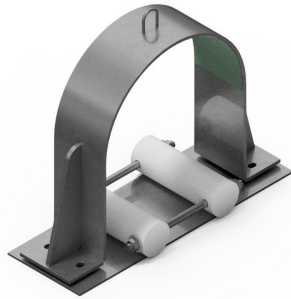
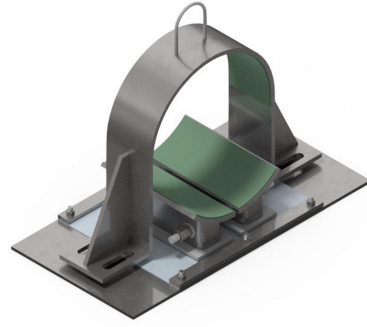
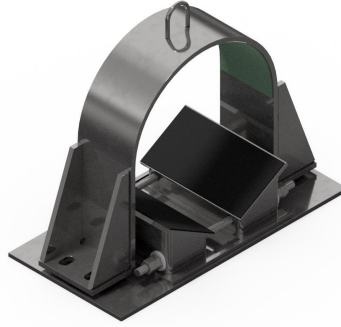
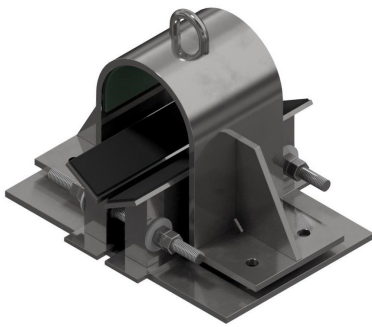


DYNAMIC RESTRAINTS, WEDGE BLOCKS & GUIDES



Release 2017.4

AAA Technology & Specialties Co., Inc.

6219 Brittmoore Road - Houston, Texas 77041-5114 USA

Tel: 1-713-849-3366 - Fax: 1-713-849-3654

URL: www.aaatech.com - E-Mail: info@aaatech.com

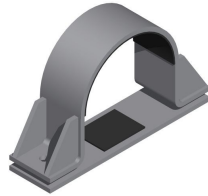
Serving Industry with Quality Pipe Supports Since 1971



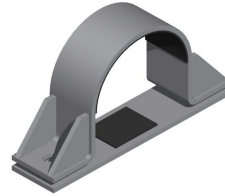
HOLD DOWN CLAMPS, WEDGE BLOCKS & GUIDE CLAMPS



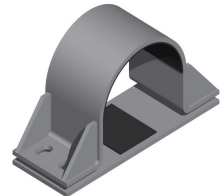
CP-1000 HOLD DOWN CLAMP
w/ Anchor Bolt Holes
1/2" to 4" Pipe Dia.



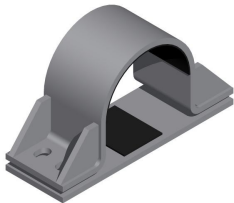
CP-2000 HOLD DOWN CLAMP
w/ Anchor Bolt Holes
4" to 18" Pipe Dia.



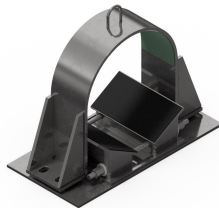
CP-2500 HOLD DOWN CLAMP
w/ 2 Anchor Bolt Slots
4" to 18" Pipe Dia.



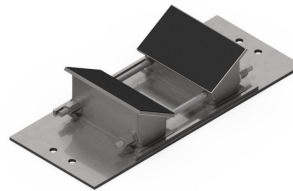
CP-3000 HEAVY HOLD DOWN CLAMP
w/ 4 Anchor Bolt Slots
4" to 48" Pipe Dia.



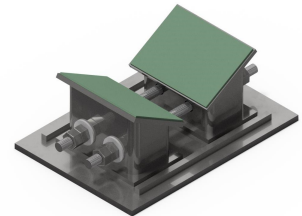
CP-3500 EXTRA HEAVY HOLD DOWN CLAMP
w/ 4 Anchor Bolt Slots
4" to 48" Pipe Dia.



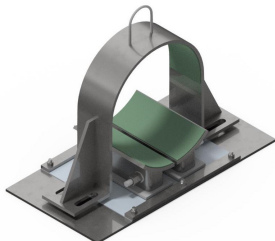
CWP-4000 HOLD DOWN CLAMP
w/ Wedge Blocks &
4 Anchor Bolt Slots
6" to 48" Pipe Dia.



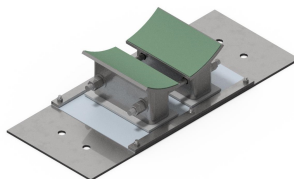
WP-2000 STD. WEDGE BLOCKS
w/ Sole Plate
6" to 48" Pipe Dia.



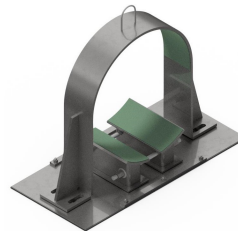
WP-2000-S SHORT WEDGE BLOCKS
w/ Sole Plate
6" to 48" Pipe Dia.



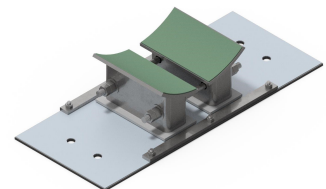
CWP-4050 HOLD DOWN CLAMP
w/ Concave Wedge Blocks
& 4 Anchor Bolt Slots
8" to 54" Pipe



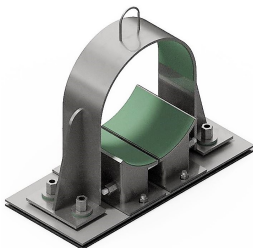
WP-2050 WEDGE BLOCKS
w/ Concave Wedge Blocks
& 4 Anchor Bolt Holes
8" to 54" Pipe



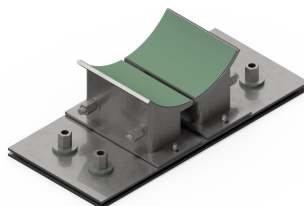
GWP-4055 GUIDE CLAMP
w/ Concave Wedge Blocks
& 4 Anchor Bolt Slots
8" to 54" Pipe



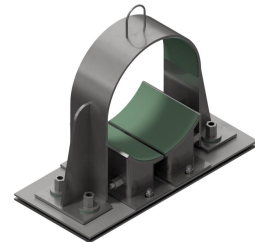
WP-2055 WEDGE BLOCKS
w/ Concave Wedge Blocks
& 4 Anchor Bolt Holes
8" to 54" Pipe



CWP-4060 HOLD DOWN CLAMP
With Sliding Base
With Concave Wedge Blocks
& 4 Anchor Bolt Slots
8" to 54" Pipe



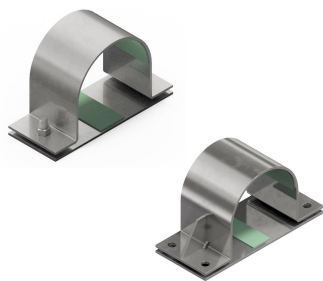
WP-2065 WEDGE BLOCKS
Concave Wedge Blocks
& 4 Anchor Bolt Holes
For use with 4060 & 4065
6" to 54" Pipe



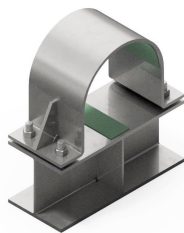
CWP-4065 GUIDE CLAMP
With Sliding Base
With Concave Wedge Blocks
& 4 Anchor Bolt Slots
8" to 54" Pipe



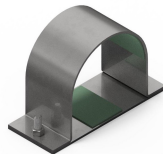
HOLD DOWN CLAMPS, WEDGE BLOCKS & GUIDE CLAMPS



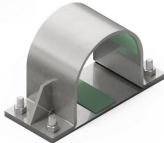
CP-1010 HOLD DOWN CLAMP
1 1/2" to 8" Pipe Dia.
10" to 36" Pipe Dia.



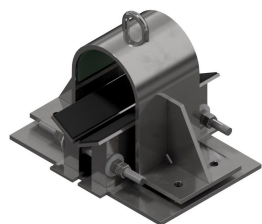
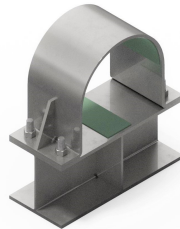
CP-1011 HOLD DOWN CLAMP & BEAM
10" to 36" Pipe Dia.



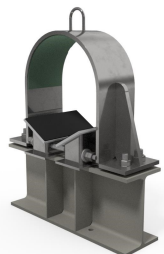
GP-1020 GUIDE CLAMP
1 1/2" to 8" Pipe Dia.
10" to 36" Pipe Dia.



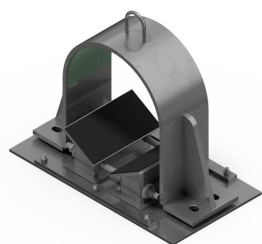
GP-1021 GUIDE CLAMP & BEAM
10" to 36" Pipe Dia.



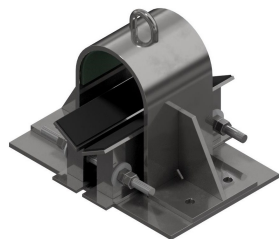
CWP-4100 HOLD DOWN CLAMP
w/ Wedge Blocks, Sole Plate & 4 Anchor Bolt Slots
2" to 54" Pipe



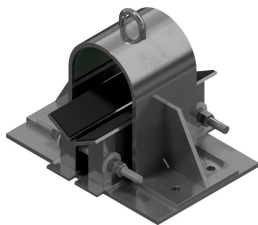
CWP-4101 HOLD DOWN CLAMP
w/ Wedge Blocks & Support Beam
2" to 54" Pipe



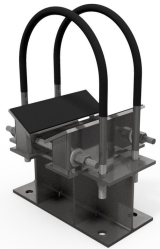
CWP-4105 HOLD DOWN CLAMP
w/ Wedge Blocks, Sole Plate w/ Axial Stops & 4 Anchor Bolt Slots
2" to 54" Pipe



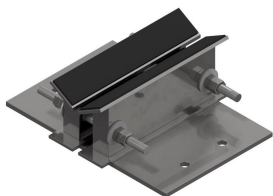
GWP-4110 GUIDE CLAMP
(1/8" Gap) w/ Wedge Blocks, Sole Plate & 4 Anchor Bolt Slots
2" to 54" Pipe



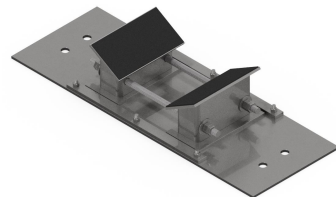
GWP-4120 GUIDE CLAMP
(1/4-1/2" Gap) w/ Wedge Blocks, Sole Plate & 4 Anchor Bolt Slots
2" to 54" Pipe



UWP-4140 TRI-BOLTS
With Wedge Blocks & Support Beam
2" to 54" Pipe



WP-2100
STD. WEDGE BLOCKS
w/ Sole Plate
2" to 54" Pipe



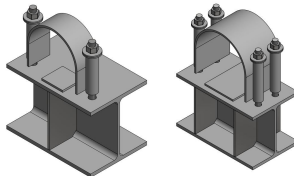
WP-2105
WEDGE BLOCKS
w/ Sole Plate w/ Axial Stops
2" to 54" Pipe



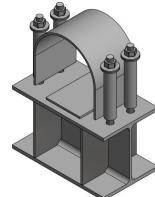
CWP-4160 & CWP-4161
HOLD DOWN CLAMP
w/ Thermoplastic Wedge Blocks, Sole Plate & 4 Anchor Bolt Slots
3" to 42" Pipe



WP-2160 & WP-2161
THERMOPLASTIC WEDGE BLOCKS
w/ Sole Plate & 4 Anchor Bolt Holes
3" to 42" Pipe



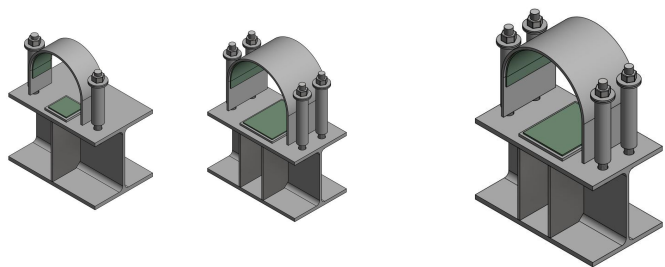
CP-4170 STANDARD
HOLD DOWN STRAP
Without Damping Bearing
1" to 6" Pipe-Single Bolt
8" to 24" Pipe-Dual Bolt



CP-4171 HEAVY DUTY
HOLD DOWN STRAP
Without Damping Bearing
8" to 24" Pipe



HOLD DOWN CLAMPS, WEDGE BLOCKS & GUIDE CLAMPS



CP-4180 STANDARD HOLD DOWN STRAP
With Damping Bearing
1" to 6" Pipe-Single Bolt
8" to 24" Pipe-Dual Bolt

CP-4181 HEAVY DUTY HOLD DOWN STRAP
With Damping Bearing
8" to 24" Pipe

A variety of different styles of Hold Down Clamps and Wedge Blocks are available from AAA Technology and Specialties Co., Inc. to fit your specific need. The examples shown in this flier illustrate the range of mechanical restraints currently available. Custom designs can be provided should your specific application require unique solutions.

<p>FEATURES:</p> <ul style="list-style-type: none"> • Latest engineering and design techniques for vibration control and guiding piping system movement. • Designs for pipe temperatures of: <ul style="list-style-type: none"> • FRP: -60°F (-51°C) to 400°F (205°C) • Elastomeric Bearing: -40°F (-40°C) to 200°F (93°C) • PTFE: -320°F (-196°C) to 300°F (149°C) • TRI*CLIP and TRI*GUARD (thermoplastic): <ul style="list-style-type: none"> • White or Black -40°F (-40°C) to 180°F (82°C) • AM -40°F (-40°C) to 340°F (171°C) • PE -40°F (-40°C) to 482°F (250°C) • Field proven & tested in years of numerous applications worldwide. • Special designs to accommodate both Dynamic (vibration) & Thermal flexibility requirements. • Designed with Elastomeric Bearing Pads (Viblon or Fabreka) to reduce structural borne vibration and noise levels, to distribute loading on the surface of the pipe and thereby minimize localized stress concentrations, and to facilitate pipe movement resulting from thermal expansion and contraction. • Mechanical clamp stiffnesses & bolt torque recommendations are available for each design to aid in engineering design & installation. • Complete assembly of components to point of connection are available including base plates, anchor bolts, nuts, washers, springs, etc. • Installation dimensions and instructions are available to facilitate accurate, trouble-free installation. • Customized engineering and design service available to facilitate any application. • High Quality Restraints provided at Competitive Prices in Reasonable Delivery Times. 	<p>CONSTRUCTION OPTIONS</p> <ul style="list-style-type: none"> • Materials: A-36 Carbon Steel, A387 Gr. 11 or 22 Alloy, ASTM A 240, Type 304, 304L, 316 or 316L. Other materials available upon request • Finish: Hot Dip Galvanized, Black, Red Oxide Primer, CZ-11, Xylan Blue, Xylan Black, Polyurea, Sermagard or in accordance with Customer's Paint Specifications • Sole Plate & Clamp Lining (Bearing Pad): FRP—Fiberglass Reinforced Plastic, PVC, Elastomeric Preformed Fabric Pad—Plain, Elastomeric Preformed Fabric Pad with Layer of PTFE, PTFE Bearing Pad, TRI*CLIP and TRI*GUARD (thermoplastic) bars. • U-Bolt Coating Options: PVC (Polyshrink), Silicone & PTFE <p>HOW TO ORDER</p> <p>Specify Restraint Figure No. (see previous pages), Nominal Pipe Dia. or Outside Dia., Material desired, if other than Carbon Steel, Finish desired, Lining desired, Accessories (i.e. anchor bolts, etc.) & Quantity required.</p> <p>Example:</p> <p>CWP-4100 HD Clamp, Wedge Blocks & Sole Plate, 24", Hot Dip Galvanized finish, Elastomeric Pad with Layer of PTFE, 1" dia. x 4" lg HDG bolts with Hvy Hex Nuts (4 req'd each clamp), Quantity Req'd: 20</p> <p>CWP-4050 HD Clamp, Contoured Wedge Blocks & Sole Plate, 30", HDG finish, 1/8" PTFE, Quantity Req'd: 4</p> <p>WP-2050 Contoured Wedge Blocks & Sole Plate, 18", HDG finish, 1/8" PTFE, Quantity Req'd: 7</p> <p>CP-3000 Heavy HD Clamp & Sole Plate, 16", HDG finish, 1/8" Elastomeric Bearing, Quantity Req'd: 7</p> <p>GP-1021 Guide Clamp & Beam, 14", Red Oxide Primer Finish, 1/8" PVC Bearing, Quantity Req'd: 2</p> <p>CP-4170 Standard Hold Down Strap without Damping Bearing, 8", Epoxy Primer, Quantity Req'd: 8</p>
--	--